

# Efka® RM 1469



## High performance polyamide wax for OEM, refinish and wood coatings

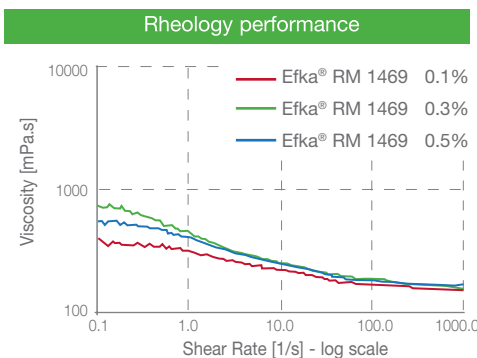
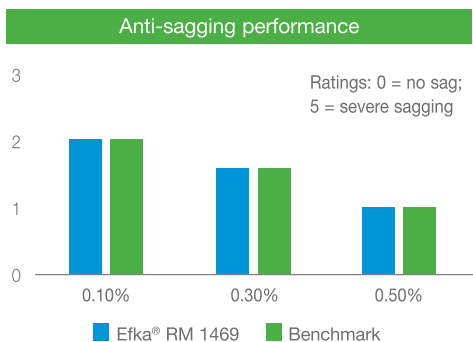
Efka® RM 1469 is a pre-activated polyamide wax thickener, which is recommended for metallic car paint for OEM & refinish coatings and for wood coatings. It exhibits exceptionally strong and durable thixotropic structure.

Efka® RM 1469 is superior in anti-sagging and enhances orientation to reduce mottling and improve flip/flop in metallic paints. Efka® RM 1469 shows excellent thixotropic effect with strong shear thinning and quick film build. Efka® RM 1469 can be applied in most solvent borne systems and has minimum effect on color and gloss.

### Performance Highlights

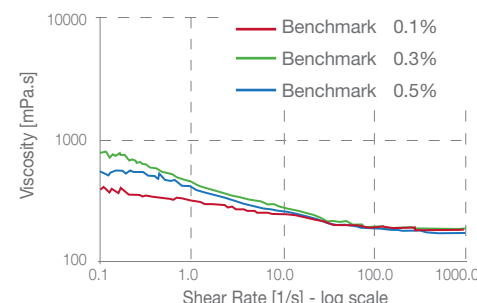
- Excellent thixotropy
- Superior in anti-sagging
- Strong shear thinning
- Long-lasting thixotropic effect without seeding
- Enhance orientation to reduce mottling and improve flip/flop in metallic paints
- Minimum effect on color and gloss in clear coatings

The chart below shows benchmark performance in sagging, gloss and rheology in an alkyd PU system.



#### Film Gloss comparison

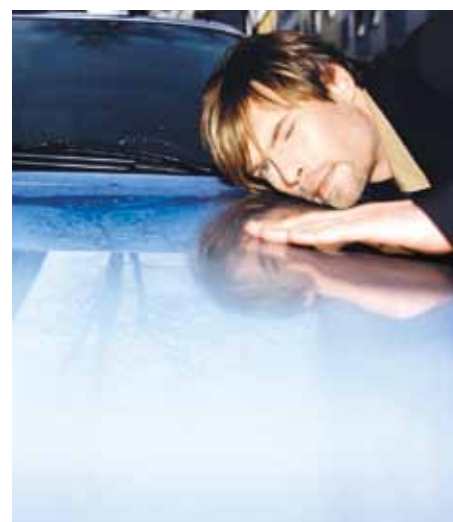
		0.1%	0.3%	0.5%
Efka® RM 1469	20°	12	12	13
	60°	52	52	54
Benchmark	20°	13	14	14
	60°	54	53	54



Efka® RM 1469 allows the formulator to increase sag resistance with no significant impact on gloss.

### Efka® RM 1469: Characteristic Values

Property	Method	Value
Appearance (color)	Visual	Yellowish white / soft paste, liquid
Density	ISO 2811-3 @ 25 °C	0.88 g/cm <sup>3</sup>
Flash point	ISO 2719	29 °C



## Contacts worldwide

### Asia

BASF East Asia Regional Headquarters Ltd.  
45/F., Jardine House  
No. 1 Connaught Place  
Central  
Hong Kong  
formulation-additives-asia@basf.com

### Europe

BASF SE  
Formulation Additives  
67056 Ludwigshafen  
Germany  
formulation-additives-europe@basf.com

### North America

BASF Corporation  
11501 Steele Creek Road  
Charlotte, NC 28273  
USA  
formulation-additives-nafta@basf.com

### South America

BASF S.A.  
Rochaverá - Crystal Tower  
Av. das Nações Unidas, 14.171  
Morumbi - São Paulo-SP  
Brazil  
formulation-additives-south-america@basf.com

[www.basf.com/formulation-additives](http://www.basf.com/formulation-additives)

The data contained in this publication are based on our current knowledge and experience. In view of the many factors that may affect processing and application of our product, these data do not relieve processors from carrying out their own investigations and tests; neither do these data imply any guarantee of certain properties, nor the suitability of the product for a specific purpose. Any descriptions, drawings, photographs, data, proportions, weights etc. given herein may change without prior information and do not constitute the agreed contractual quality of the product. The agreed contractual quality of the product results exclusively from the statements made in the product specification. It is the responsibility of the recipient of our products to ensure that any proprietary rights and existing laws and legislation are observed. When handling these products, advice and information given in the safety data sheet must be complied with. Further, protective and workplace hygiene measures adequate for handling chemicals must be observed.

® = registered trademark of the BASF Group