

Attagel® 30

Attapulgite rheology modifier for low-shear viscosity control

Performance

- Thixotropic
- Syneresis and sag resistance
- Smooth texture and easy flow
- Easy to disperse in aqueous and solvent-based systems
- Shrink and crack resistance
- Cost-effective

Sustainability

- Low VOC according to EU 2004/42' & US-EPA Method 24
- Non-APEO
- Made from naturally occurring clay
- Solvent-free
- Odor-free

Typical properties

pH (DI Water)	9.8
Bulk density (loose)	35 lbs/ft ³ 561 kg/m ³
Specific gravity	2.4
FANN viscosity (3.8% clay in Fresh Water)	26

Attagel 30

Attapulgite rheology modifier for low-shear viscosity control

ATTAGEL 30 is made from specialty processed attapulgite, a hydrated magnesium aluminosilicate and a principle member of the fuller's earth family of clay minerals: $(\text{Mg},\text{Al})_5\text{Si}_8\text{O}_{20}\cdot 4\text{H}_2\text{O}$

Applications

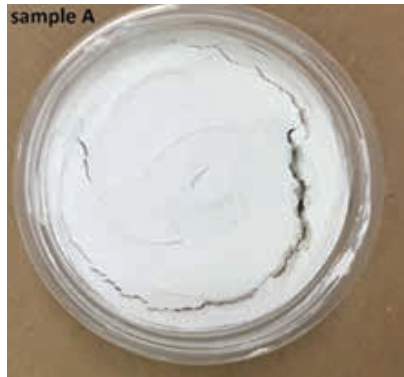
Tape joint compounds

ATTAGEL grades provides for smooth, scratch-free application in these thick films, as well as for sag resistance, viscosity control, spreadability and excellent feathering at low cost.

Asphalt coatings

ATTAGEL 30 builds excellent thixotropic thickening characteristics in asphalt cutbacks and emulsions, such as roof coatings, underbody coatings, driveway sealers, and maintenance coatings. They offer easy application properties with excellent storage stability and syneresis (liquid separation) control.

The sample below show the benefits of using ATTAGEL 30 to improve joint compound crack resistance in thick films.



Sample A – control



M13 with ATTAGEL 30

Contacts

Please contact our technical service department for more help on formulating with products from the Attagel product line.

Asia
BASF East Asia Regional HQ Ltd.
45/F, Jardine House
No. 1 Connaught Place Central Hong Kong
formulation-additives-asia@basf.com

Europe, Africa, West Asia
BASF SE
Formulation Additives
67056 Ludwigshafen
Germany
formulation-additives-europe@basf.com

North America
BASF Corporation
11501 Steele Creek Road
Charlotte, NC 28273
USA
formulation-additives-nafta@basf.com

South America
Rochaverá - Crystal Tower
Av. das Nações Unidas, 14.171
Morumbi - São Paulo-SP
Brazil
formulation-additives-south-america@basf.com

BASF Corporation, Charlotte, NC

The data contained in this publication are based on our current knowledge and experience. In view of the many factors that may affect processing and application of our product, these data do not relieve processors from carrying out their own investigations and tests; neither do these data imply any guarantee of certain properties, nor the suitability of the product for a specific purpose. Any descriptions, drawings, photographs, data, proportions, weights etc. given herein may change without prior information and do not constitute the agreed contractual quality of the product. The agreed contractual quality of the product results exclusively from the statements made in the product specification. It is the responsibility of the recipient of our products to ensure that any proprietary rights and existing laws and legislation are observed. When handling these products, advice and information given in the safety data sheet must be complied with. Further, protective and workplace hygiene measures adequate for handling chemicals must be observed. (12/2019)

® = Registered trademark of the BASF Group